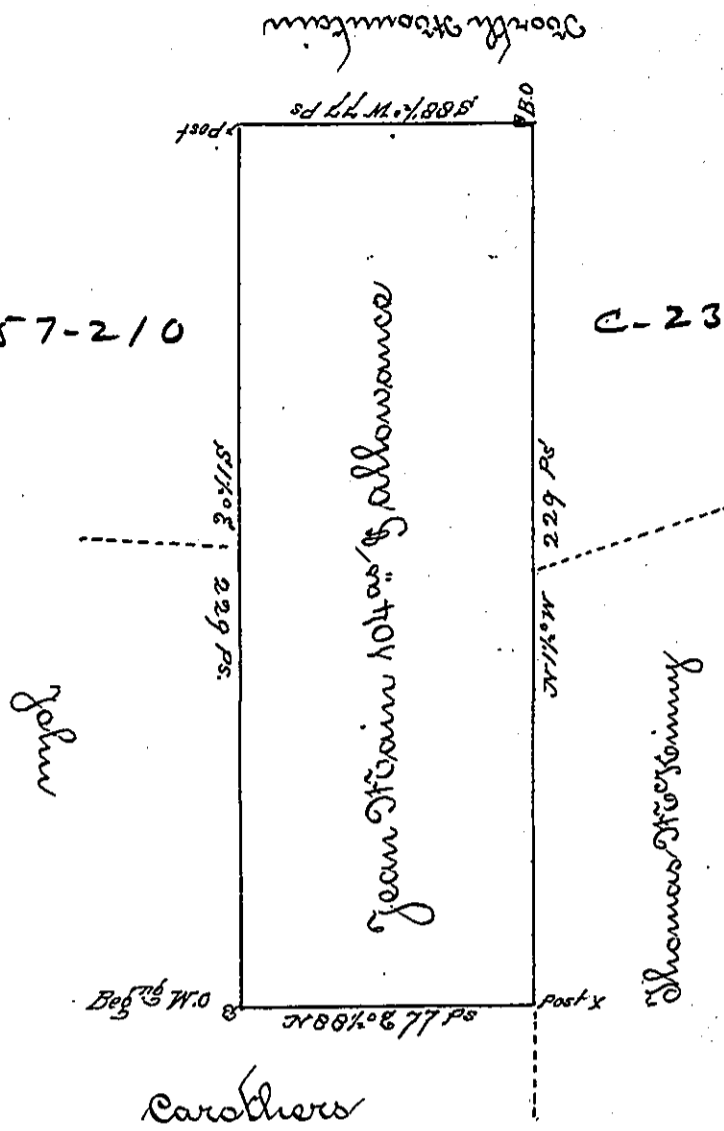


C-157-210

C-157-210

C-232-12



A Draught of a Tract of Land Situate in East Pennsborough Township  
 Cumberland County, Containing One Hundred and four acres and the  
 usual allowance of six per cent for Roads Surveyed Sept 22nd 1769 in Pur-  
 suance of and Order of Survey granted to Jean McKeown Dated Decr 20<sup>th</sup>  
 1768, 53<sup>rd</sup> 3511.

To John Lukeens Esq. }  
 Surveyor General }

John Armstrong  
 19.5

IN TESTIMONY that the above is a copy of the original remaining on file in the  
 Department of Internal Affairs of Pennsylvania, made con-  
 formably to an Act of Assembly approved the 16th day of  
 February, 1833. I have hereunto set my Hand and caused  
 the Seal of said Department to be affixed at Harrisburg, this  
 seventh day of July 1896-

James W. Pitta  
 Secretary of Internal Affairs.